

## GLM v1.5.0 Release Notes

Please note that this is a software release for the 1200 and 8200 Series monitor and 7200 Series subwoofer systems. This release is not applicable to SE systems (SE7261A).

Concurrent with the release of GLM software version 1.5.0, two new three-way products, the 1237A and 1238A Smart Active Monitors have started shipping. GLM software release 1.5.0 has a number of new features and updates that are directly related to these new models. 1237A and 1238A monitors can be combined in a system with all existing SAM products.

### ***GLM Software Version 1.5.0 for Windows and Macintosh***

GLM software version 1.5.0 runs on PC Windows XP, Windows Vista, Windows 7 or Windows 8 desktop operating systems, as well as Macintosh computers running Mac OS X operating system version Mountain Lion (10.8) or Mavericks (10.9).

GLM software version 1.5.0 adds the support for the Mac OS X Mavericks operating system.

#### Notes for Macintosh installations

For Macintosh there are two installation packages, called 'GLM\_1\_5\_0.mpkg' and 'XQuartz\_2\_7\_5.pkg'.

Package 'GLM\_1\_5\_0.mpkg' contains installation files for the GLM software and Autocal.

Package 'XQuartz\_2\_7\_5.pkg' includes the X11 application software. This package is required for GLM and must be installed in order to run the Autocal system calibration.

More info and other releases of XQuartz can be found from <http://xquartz.macosforge.org>



GLM\_1\_5\_0.mpkg



Xquartz\_2\_7\_5.pkg

## Installation procedure for Macintosh computers

- First, install GLM software by double clicking on the 'GLM\_1\_5\_0.mpkg' file. Follow instructions on the screen.
- After the GLM installation has been completed, install the X11 by double clicking on the 'XQuartz\_2\_7\_5.pkg' file. Follow instructions on the screen.

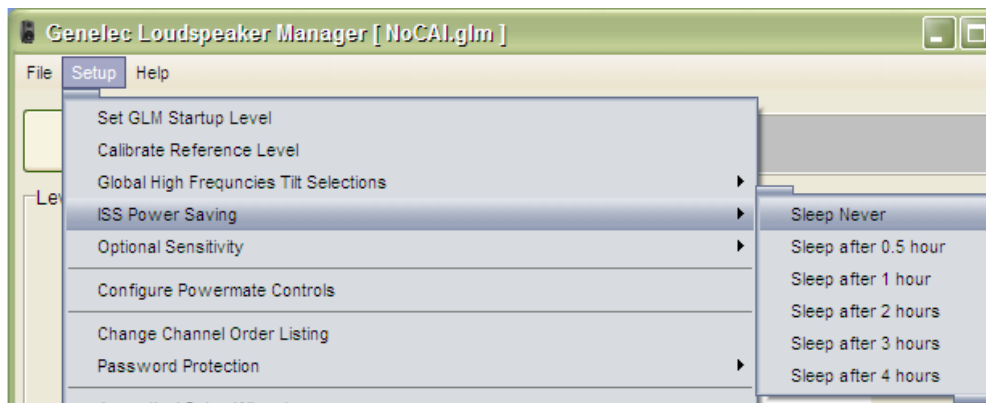
We recommend that after the X11 installation has been completed you log out and log in again in order to ensure that the X11 is fully in use.

**Note.** If you are running other versions of the X11 application, the Autocal process may fail during the 'Input calibration' or 'Calculation'. In this case, the Autocal window will not complete. This problem can be solved by updating the X11 application to the correct version.

## ***New features***

### ISS Power Saving Settings

Once an audio signal is absent in the analog or digital inputs and the GLM network control has stopped after the computer stops running the GLM software, the ISS function can put the monitors to a low power saving mode. The user can set the waiting time before entering the ISS power saving mode in the Setup menu. The Default factory setting is "Sleep Never".



Currently 1237A and 1238A monitors have the ISS capability. When there are monitors that do not have the ISS capability, a dialog box appears saying "ISS cannot be set for some monitors".

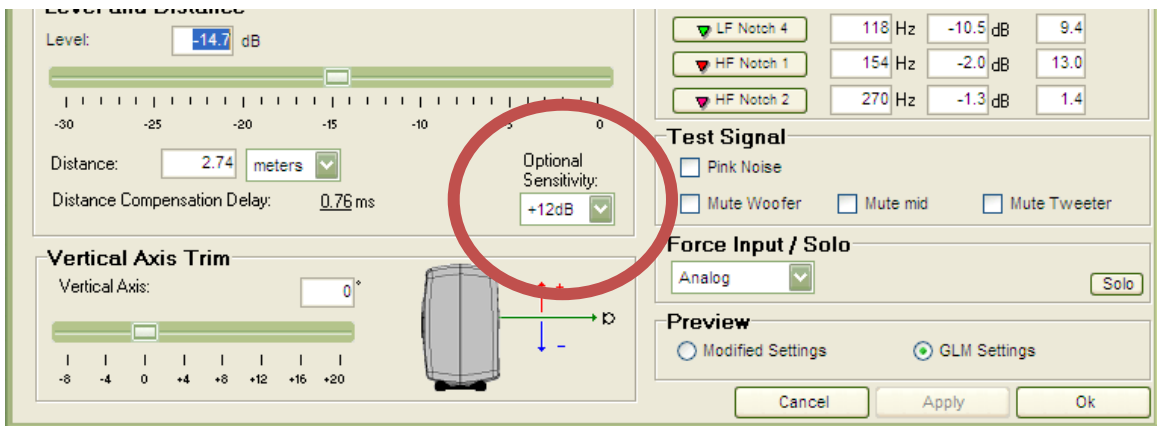
### Optional Sensitivity

When the analog source output level is low or when a SAM monitor is located far away from the listening position relative to other SAM monitors, it may be useful to apply Optional Sensitivity. The 1237A and 1238A provide Optional Sensitivity (GLM

software version 1.5.0 or later must be used). The optional sensitivity can be set to +6dB, +12dB, and +18dB.



The Acoustical Settings Editor window has been modified (see below). The optional sensitivity selection is available individually for each monitor in the Acoustic Settings editor window. This enables individual tailoring of the optional sensitivity setting.



## AutoLink Improvements

Improvements have been made to streamline the AutoLink save function and minimize function.

The **Exit** button has been removed.

Minimizing is now called **Cancel**. Pressing Cancel will minimize AutoLink and ignore any settings made.

**Save Setting** button – after changes to the AutoLink settings a dialog box with 3 options (Cancel / No / Yes) will be presented.

**Cancel** cancels saving, but keeps the AutoLink window open.

**No** ignores changes and minimizes the AutoLink window.

**Yes** saves the new settings and minimizes the AutoLink window.

### Bug fixes specific for Windows

Linked library (dll) conflicts blocking the Autocal optimization from starting have been fixed.

### Bug fixes specific for Macintosh

App Nap can cause loss of GLM network connection in earlier GLM versions. This issue has been resolved by instructing OSX 10.9 to not put the GLM software to take a "NAP".

If you have any questions, please do not hesitate to contact us!

**Genelec Oy**